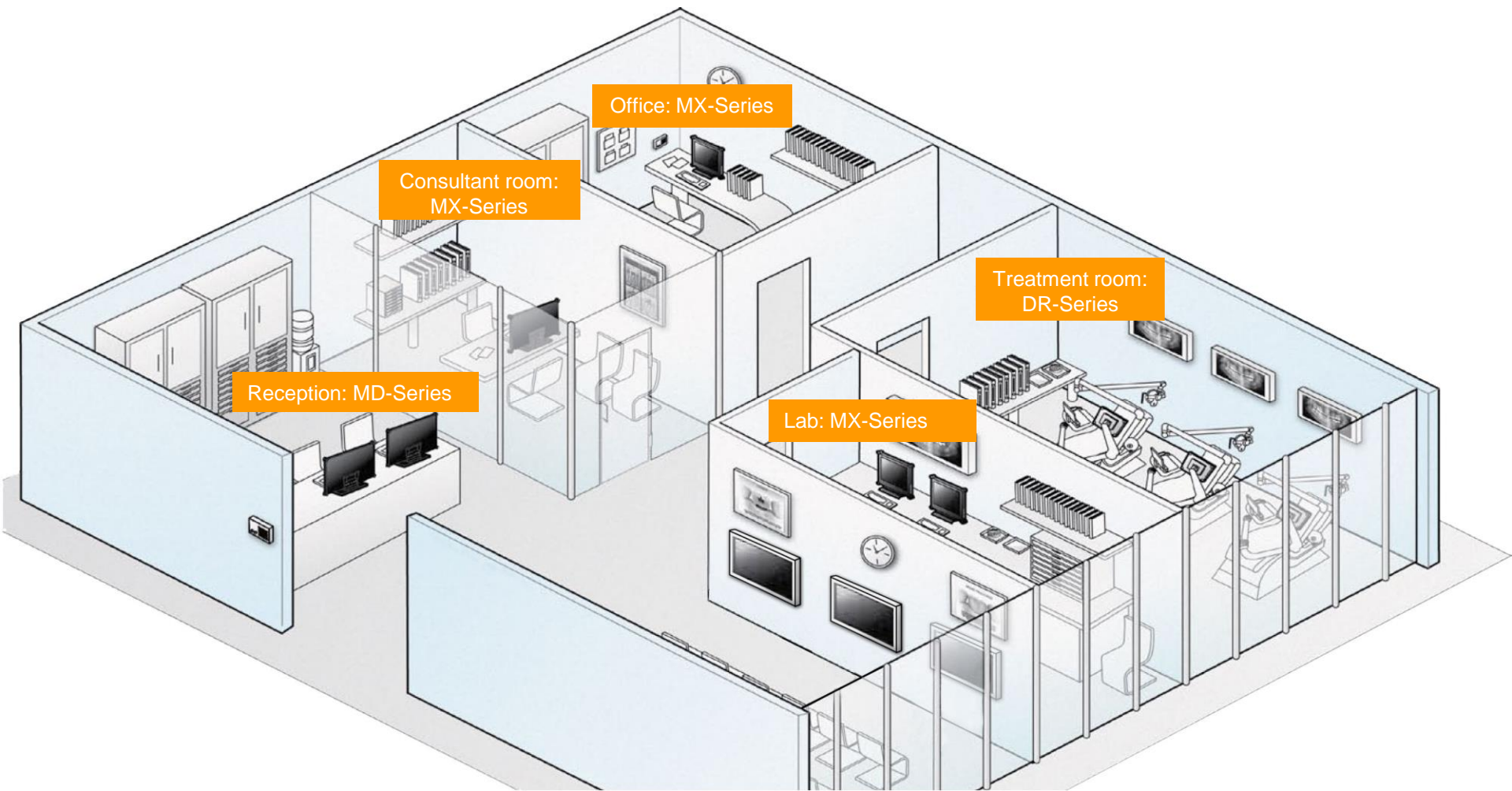


# AG Neovo Medical Displays

MX-Series / DR-Series / MD-Series

Date: Sep. 12, 2017

# AG Neovo New Professional Displays for Medical Environment



# AG Neovo New Professional Displays for Medical Environment

## MX-Series 24"/22"



Medical displays, DICOM Part 14 standard complied, for the high-traffic clinical review applications

## DR-Series 22"/17"



Dental Displays, designed with usability specific for the dental practices

## MD-Series 27"/24"



Medical Displays, with ergonomic and stylish design, for daily administration at indirect medical environment

# MX-Series Introduction

## Market Position

Built on Optical NeoV™ glass and metal casing delivering high protection and easy hygiene features, the MX-Series, with medical grade safety certification and ground-wiring power supply design, presents consistent and precise image color by DICOM Part 14 calibration for the high-traffic clinical review applications.

### Applicable at

Consultant room

Doctor office

Laboratory



# MX-Series Introduction

## Features

- Compliance with DICOM Part 14 with calibrated greyscale and brightness
- Metal casing and NeoV™ Optical Glass
- EN60601-1 and IEC60601-1 medical certification
- Equipotential terminal for safety standard
- Versatile inputs: VGA, DVI, HDMI, DisplayPort, Audio in
- Support PIP/PBP, 3D Deinterlace, Noise Reduction functions
- Anti-Burn-in™ technology
- EcoSmart Sensor allows brightness adjustment by ambient light
- VESA Mounting compliance to fit different medical environments
- Selectable aspect ratio for ultimate image
- Rigorous screening of the components for mission-critical 24/7 applications

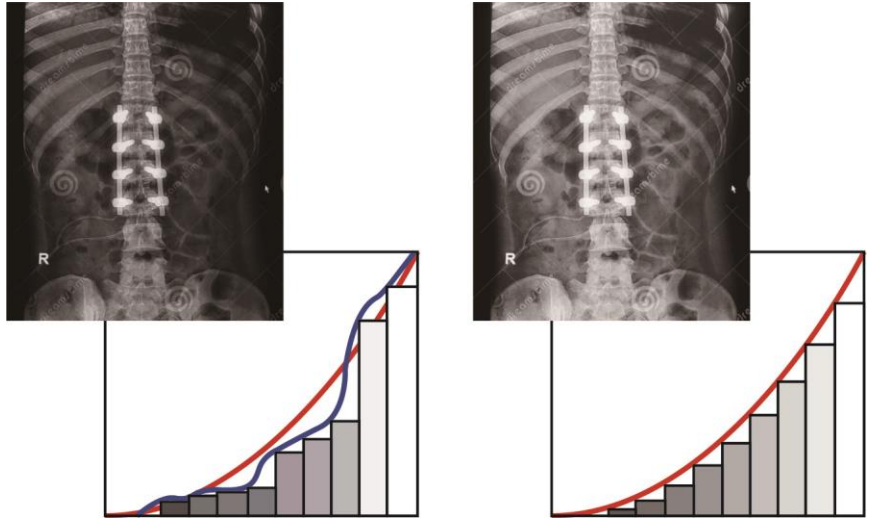


# MX-Series Introduction

## Highlights: Delicate Settings for Image Quality

### DICOM mode for consistent image

The DICOM Part 14 regulates the standard of greyscale to deliver consistent image in each clinical displays. The MX-Series are calibrated complied with DICOM Part 14 to present consistent and precise views of clinical data and non-diagnostic images to enhance collaboration between healthcare professionals.



### By-model DICOM color calibrations

To provide consistent image quality, each unit of MX-Series has been calibrated for complying with DICOM Part 14 standard , ensuring the precise review for clinical data or non-diagnostic images.

# MX-Series Introduction

## Highlights: High Reliability with Easy Hygiene



### NeoV™ Optical Glass:

- > Tolerance of alcohol and detergent
- > Protectivity with hardness

MX-Series, with NeoV™ Optical Glass, designed specifically to protect displays in multi-user and public environments, are the best displays for myriad high-traffic medical settings with benefits of easy cleaning and disinfection.

### Distinctive Metal Housing for Added Strength

MX-Series metal housing design enhances the strength of monitor for impact proof and product durability.

	NeoV™ Optical Glass
Anti-acid	NeoV™ Optical Glass is able to maintain the same optical spectrum after immersed in acid liquid for <b>24</b> hours consecutively
Anti-alkali	NeoV™ Optical Glass is able to maintain the same optical spectrum after immersed in alkali liquid for <b>6</b> hours consecutively

Detergent-tolerant glass for the disinfection/clean requirement in medical environment

# DR-Series Introduction

## Market Position

The DR-Series, optimizing the image clarity for dentists to get across to patients diagnosis and treatment efficiently, is crafted specially for dental settings. The Optical NeoV™ Glass and appealing white metal exterior with optional handles deliver high protection, easy hygiene and usability, attaining excellence in form as well as in function.

### Applicable at

Treatment room

Dental chair



EN/IEC 60601-1  
Medical-Grade



# DR-Series Introduction

## Features

- EN60601-1 and IEC60601-1 medical certification
- NeoV™ Optical Glass and metal casing for easiness of hygiene and protection
- DC 24V medical grade power adaptor allows longer distance connection
- Equipotential terminal for safety standard
- Gamma correction and high contrast ratio for better colour reproduction of image
- Black-level alignment for presenting delicate detail of darkness
- Illuminator mode for easy X-ray film viewing
- VESA Mounting compliance and optional handle for easy movement of display
- Wide viewing angle for multiple users
- Versatile inputs: VGA, DVI, CVBS (BNC x 2), HDMI, S-Video, DP & RS-232
- EcoSmart Sensor and ES 7.0 panel for low watt power consumption
- EcoSmart Sensor allows brightness adjustment by ambient light
- Anti-Burn-in™ technology
- 3D Comb Filter/ Deinterlace/ Noise Reduction/ Freeze
- Rigorous screening of the components for mission-critical 24/7

applications



# DR-Series Introduction

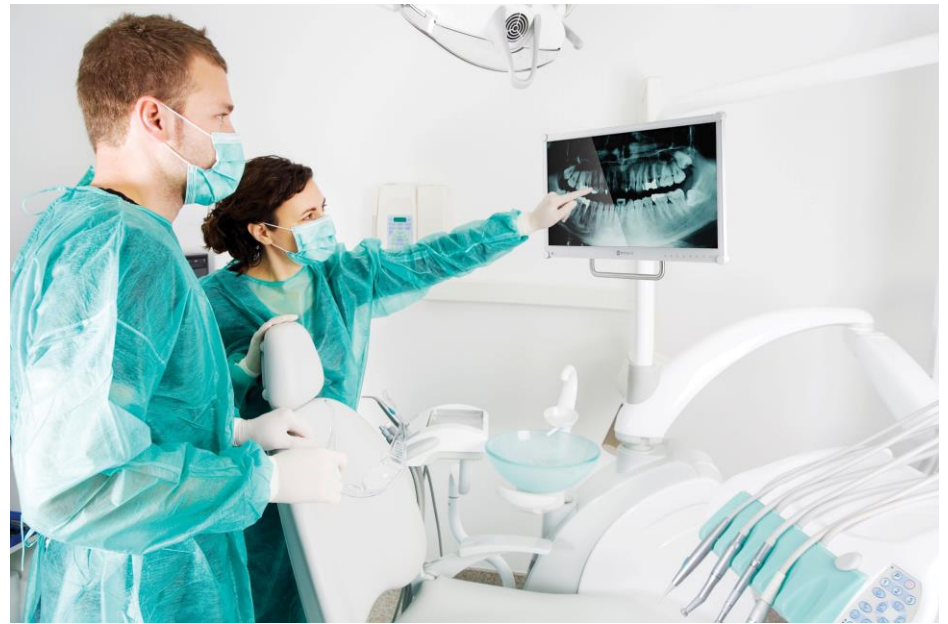
## Highlights: Enhanced Colour Reproduction and Image Clarity

### Gamma Correction & Black Level Alignment

The DR-Series supports 2.0/2.2/2.4/S gamma curve correction and black level alignment to capture darker details to satisfy the requirement of X-ray image clarity.

### High Contrast Ratio

The high contrast ratio, 3000:1 (DR-22E), helps dentists present colour image with vivid color reproduction.



# DR-Series Introduction

## Highlights: Versatility and Adaptability

### Versatile I/O ports

The DR-Series has versatile I/O ports, including HDMI/DisplayPort, to flexibly integrate with different devices, for patient entertainment or other purposes.

### Fit in Dental Environment with Usability



VESA mount compliance



Handles for dental chair



Illuminator mode for X-ray film viewing



EN/IEC 60601-1  
Medical-Grade

24V medical-grade adaptor

# DR-Series Introduction

Highlights: High reliability with easy hygiene



**NeoV™ Optical Glass:**

- > Tolerance of alcohol and detergent
- > Protectivity with hardness

DR-Series, with NeoV™ Optical Glass, designed specifically to protect displays in multi-user and public environments, are the best displays for myriad high-traffic medical settings with benefits of easy cleaning and disinfection.

	NeoV™ Optical Glass
Anti-acid	NeoV™ Optical Glass is able to maintain the same optical spectrum after immersed in acid liquid for <b>24</b> hours consecutively
Anti-alkali	NeoV™ Optical Glass is able to maintain the same optical spectrum after immersed in alkali liquid for <b>6</b> hours consecutively

Detergent-tolerant glass for the disinfection/clean requirement in medical environment

## Distinctive Metal Housing for Added Strength

MX-Series metal housing design enhances the strength of monitor for impact proof and product durability.

# DR-Series Introduction

## Highlights: Low Power Consumption



### ES 7.0 Panel

With the ES 7.0 panel (Energy Star 7.0), the DR-Series provides outstanding performance in energy efficiency (less than 0.5W at stand-by mode), helping not only conserve the environment but also lower the total cost of ownership.

### EcoSmart Sensor

As is most fitting and crucial to offer endless application possibilities, the EcoSmart Sensor optimises energy efficiency by automatically adjusting brightness in accordance with ambient luminance.

Light environment  
(brightness increased)



Dark environment  
(Brightness reduced)



# MD-Series Introduction

## Market Position

The MD-Series, with the adjustable stand and a wide viewing angle, brings the benefits of comfort and sharing by multiple users to create an efficient workplace in the medical environment. The white stylish design and flexibility in installation make the MD-Series a core component in medical settings: reception, nurses' carts, charting stations, and pharmacies.

### Applicable at

Reception

Pharmacy



EN/IEC 60601-1  
Medical-Grade

# MD-Series Introduction

## Features

- EN60601-1 and IEC60601-1 medical certification
- Portrait/landscape mode selectable
- Wide viewing angles for multiple people use
- White and stylish design for medical environment
- Ergonomically designed stand for viewer's comfort and multiple viewing options
- Selectable aspect ratio for ultimate image size
- VESA mounting for flexible installation in medical environments



# MD-Series Introduction

## Highlights: Ergonomic Design for Best Comfort

### Adjustable stand

The adjustable stand not only brings comfort for medical professions but also allows them adjust display angle with convenience. Portrait or landscape modes are available for different image format.





# MD-Series Introduction

## Highlights: Wide Viewing Angel with Benefits of Image Clarity

### IPS Panel

The IPS panel delivers remarkably crisp images of precise colours and consistent brightness regardless of viewing angles.

### Selectable Aspect Ratio

The MD-Series has selectable aspect ratio for the image clarity of different types of images.



Wide Viewing Angle

# Comparison

Applications		High-Traffic Medical Environment	Indirect Medical Environment	Dental Environment
Model Names		MX-22/MX-24	MD-24/MD-27	DR-17E/DR-22E
Panel Features	Panel Type	LED-Backlit TFT LCD (TN)	LED-Backlit TFT LCD (IPS)	DR-17E: LED-Backlit TFT LCD (TN) DR-22E: LED-Backlit TFT LCD (VA)
	Viewing Angle (H/V)	170°/160°	178°/178°	178°/178° (DR-17E:170°/160°)
	Contrast Ratio	1000:1	1000:1	DR-17E:1000:1 DR-22E: 3000:1
	Response Time	5 ms	5 ms	5 ms
Special Features	Easy Hygiene (NeoV™)	✓	N/A	✓
	DICOM Mode	✓	N/A	N/A
	PIP/PBP	✓	N/A	N/A
	HDMI-CEC	N/A	N/A	✓
	Gamma Correction	✓	N/A	✓
	Black Level Alignment	✓	N/A	✓
	Picture Mode	✓	✓	✓
	Illuminator Mode	N/A	N/A	✓
	Adjustable Stand	N/A	✓	N/A
VESA Mount	✓	✓	✓	
Power	Power Supply	DC 12 V	DC 12 V	DC 24 V
	Power Consumption	<0.5 W (Stand by/off)	<0.5 W (Stand by/off)	<0.5 W (Stand by/off)
	Equipotential Terminal	✓	N/A	✓

# Comparison

Applications		High-Traffic Medical Environment	Indirect Medical Environment	Dental Environment
Model Names		MX-22/MX-24	MD-24/MD-27	DR-17E/DR-22E
Connectors	VGA	V	V	V
	DVI-D	V	N/A	V
	HDMI	V	V	V
	Display Port 1.2	V	N/A	V
	RS-232 In	N/A	N/A	V
	CVBS In x 2	N/A	N/A	V (BNC)
	CVBS Out x 2	N/A	N/A	V (BNC)
	S-video	N/A	N/A	V
	Audio in for PC	N/A	N/A	V
	Audio in for Video	N/A	N/A	V
	Audio out for Video	N/A	N/A	V
	USB (FW update / Media player)	N/A	N/A	V



## Thank You

All specifications are subject to change without prior notice.

© 1999-2017 AG Neovo. All rights reserved.

The name AG Neovo is a trademark of Associated Industries China, Inc.

All other trademarks are the property of their respective owners.

[www.agneovo.com](http://www.agneovo.com)