

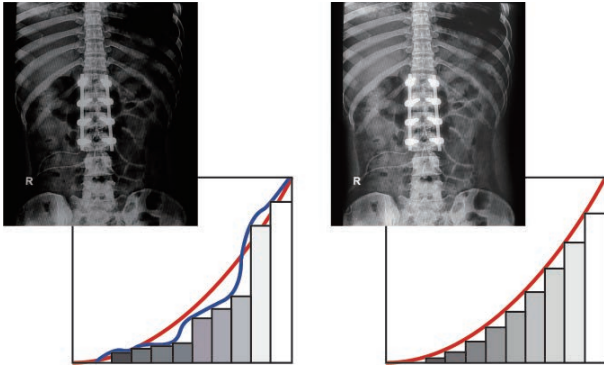
MX-Series LED-backlit Display 24" | 22"

Professional Clinical Displays of High Performance, Easy Maintenance



On top of DICOM compliance and medical-grade safety certification, the MX-Series are a premium choice for clinical review displays thanks to their ease for cleaning and disinfection. Equally important is their durability, derived from metal casing and NeoV™ Optical Glass, and multitasking feature that set them apart as professional displays fitting for myriad high-traffic medical settings.





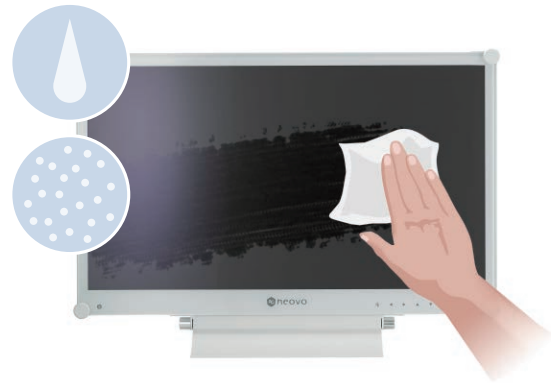
DICOM Mode

Consistent Image Clarity

The MX-Series are fully competent for consistently rendering clinical data and non-diagnostic images. Meticulous calibration ensures their compliance with the DICOM Part 14 standard and, in turn, superb display quality manifested by the most accurate and consistent shadings possible over time.

Easy Hygiene, High Reliability

The anti-acid and anti-alkali coating treatment of Neov™ Optical Glass helps the MX-Series withstand cleaning and disinfection. With the displays also bolstered by metal casing, this proprietary glass technology shields them from scratches or other damage and dramatically enhances image quality.



Versatility for Multitasking

Multiple signal source options, including HDMI and DisplayPort 1.2, offer flexibility for the MX-Series to integrate with other instruments. Along the same lines is their PIP/PBP capability that makes possible multitasking—studying different images or matching medical records—in a single display.

Medical-Grade Safety Certification

In a departure from standard displays, the MX-Series adopt specially designed low-voltage medical-grade power supply and earth-wire grounding to ensure safety, performance, and reliability—three key requirements for any professional medical environment. Compliance with the EN/IEC 60601-1 standards ensures their safe and reliable performance in the demanding medical setting.



EN/IEC 60601-1
Medical-Grade

Features

- Compliance with DICOM Part 14 with calibrated greyscale and brightness
- Metal casing and NeoV™ optical glass
- EN60601-1 and IEC60601-1 medical certification
- Equipotential terminal for safety standard
- Versatile inputs: VGA, DVI, HDMI, DisplayPort, Audio in
- Support PIP/PBP, 3D Deinterlace, Noise Reduction functions
- Anti-Burn-in™ technology
- EcoSmart Sensor allows brightness adjustment by ambient light
- VESA Mounting compliance to fit different medical environments
- Selectable aspect ratio for ultimate image
- Rigorous screening of the components for mission-critical 24/7 applications
- Gamma correction and black-level alignment



Specifications

MX-24

MX-22

Panel	Panel Type	LED-Backlit TFT LCD	LED-Backlit TFT LCD
	Panel Size	23.6"	21.5"
	Max. Resolution	FHD 1920 x 1080	FHD 1920 x 1080
	Pixel Pitch	0.2715 mm	0.2482 mm
	Brightness	300 cd/m ²	250 cd/m ²
	Contrast Ratio	1,000 : 1	1,000 : 1
	Viewing Angle (H/V)	170°/160°	170°/160°
Frequency (H/V)	H Freq.	24 kHz – 82 kHz	24 kHz – 82 kHz
	V Freq.	50 Hz – 75 Hz	50 Hz – 75 Hz
Input	VGA	15-Pin D-Sub	15-Pin D-Sub
	DVI	24-Pin DVI-D	24-Pin DVI-D
	HDMI	HDMI	HDMI
	DisplayPort	DisplayPort 1.2	DisplayPort 1.2
Audio	Audio In	1 x stereo audio jack for PC (3.5 mm)	1 x stereo audio jack for PC (3.5 mm)
	Speaker	2 W X 2	2 W X 2
Power	Power Supply	External	External
	Power Requirement	DC 12 V	DC 12 V
	Consumption	< 19 W (On)	< 18 W (On)
NeoV™ Optical Glass	Stand By	< 0.5 W (Stand-by/ Off)	< 0.5 W (Stand-by/ Off)
	Thickness	3.0 mm (0.12")	3.0 mm (0.12")
	Reflection Rate	< 1%	< 1%
	Transmission Rate	≥ 97%	≥ 97%
Operating Conditions	Coating Hardness	9H	9H
	Temperature	0°C ~ 40°C (32°F ~ 104°F)	0°C ~ 40°C (32°F ~ 104°F)
Storage Conditions	Humidity	10%~90% (No condensation)	10%~90% (No condensation)
	Temperature	-20°C ~ 60°C (-4°F ~ 140°F)	-20°C ~ 60°C (-4°F ~ 140°F)
Mounting	Humidity	5%~95% (No condensation)	5%~95% (No condensation)
	VESA FPMPI	Yes (100 x 100 mm & 75 x 75 mm)	Yes (100 x 100 mm & 75 x 75 mm)
Security	Kensington Security Socket	Yes	Yes
Dimensions	w/ base (W x H x D)	562.0 x 397.0 x 155.0 mm (22.1" x 15.6" x 6.1")	513.0 x 369.0 x 155.0 mm (20.2" x 14.5" x 6.1")
	Packaging (W x H x D)	676.0 x 525.0 x 213.0 mm (26.6" x 20.7" x 8.4")	602.0 x 476.0 x 212.0 mm (23.7" x 18.7" x 8.3")
Weight	w/o base	7.8 kg (17.2 lb)	6.9 kg (15.2 lb)
	Packaging	10.6 kg (23.4 lb)	9.5 kg (20.9 lb)
Regulation Approval	Certification & Compliance	CE, EN60601-1, IEC60601-1, RoHS, WEEE, REACH	CE, EN60601-1, IEC60601-1, RoHS, WEEE, REACH
Accessories	Supplied	Power Cord, Power Adaptor, 15-Pin D-sub Cable, Audio Cable, Quick Start Guide, Warranty Card	Power Cord, Power Adaptor, 15-Pin D-sub Cable, Audio Cable, Quick Start Guide, Warranty Card
Optional Accessories		Wall Mount: Wall Mounting Arm: WMA-01 Wall Mounting Kit: WMK-01, WMK-03 Ceiling Mount: CMP-01 Desk Mount: Desk Mounting Kit: DMC-01, DMC-02D Desk Mounting Stand: DMS-01D, DMS-01Q Height Adjustable Stand: ES-02 Handle: HDL-02	Wall Mount: Wall Mounting Arm: WMA-01 Wall Mounting Kit: WMK-01, WMK-03 Ceiling Mount: CMP-01 Desk Mount: Desk Mounting Kit: DMC-01, DMC-02D Desk Mounting Stand: DMS-01D, DMS-01Q Height Adjustable Stand: ES-02 Handle: HDL-02

All specifications are subject to change without prior notice.

Copyright © 2017 AG Neovo. All rights reserved. The name AG Neovo is a trademark of AIC.

All other trademarks are the property of their respective owners.

P/C: MX2400/MX2200 Version 1.0, 20170824



Global Headquarters

Taipei, Taiwan

EMEA Regional Headquarters

Capelle a/d IJssel, The Netherlands

North & South America Regional Headquarters

San Jose, CA, U.S.A.

Asia-Pacific Regional Headquarters

Taipei, Taiwan

Canada Sales Office

Vancouver, B.C., Canada

China Sales Office

Shanghai, China

Czech Republic Sales Office

Brno, Czech Republic

Denmark Sales Office

Stoevring, Denmark

Germany Sales Office

Mechernich, Germany

Italy Sales Office

Livorno, Italy

Spain Sales Office

Barcelona, Spain

Ukraine Sales Office

Lviv, Ukraine

www.agneovo.com